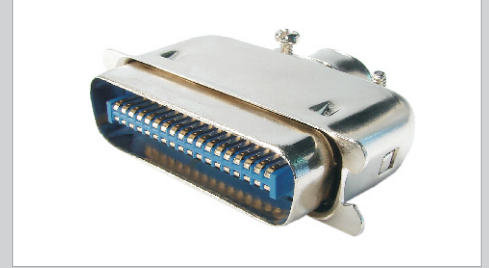


- CSMN-36-P - 36 contatos com capa plástica 90° / 36 contacts with plastic cover 90°
- CSMC-36-C - 36 contatos com capa metálica 180° / 36 contacts with metal cover 180°
- CSMN-50-C - 50 contatos com capa metálica 90° / 50 contacts with metal cover 90°
- CSMC-50-C - 50 contatos com capa metálica 180° / 50 contacts with metal cover 180°

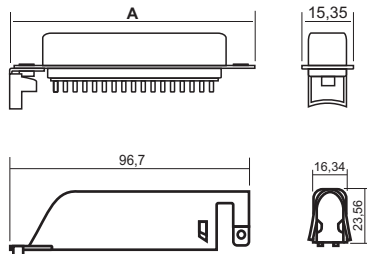


Especificações / Specifications

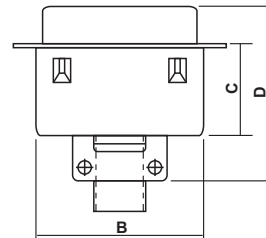
Corrente máxima / Current rating	3 A
Resistência de contato inicial máx. / Contact initial resistance	25 mΩ
Resistência de isolamento mín. / Insulation resistance	1000 MΩ (500 VCC /VDC)
Rigidez dielétrica / Withstanding voltage	1000 VCA / VAC (1 minuto / minute)
Temperatura de operação / Operate temperature range	-55 ~ 105°C
Material do isolador / Insulator material	PBT UL94V-0
Material dos contatos / Contact material	Bronze fosforoso dourado / Phosphor bronze with gold finish
Carcaça / Body	Aço níquelado / Nickel plated steel

Dimensões e diagramas / Dimensions and layouts

CSMN



CSMC



Núm. contatos Num. of contacts	Dimensões / Dimensions (mm)			
	A	B	C	D
36	67,70	53,00	22,60	40,30
50	82,60	68,10	24,80	45,00

Tolerância / Tolerance : ± 0,20 mm

Todas as dimensões em milímetros / All dimensions in millimeters