

- Chave táctil - 6x6mm
- 4 terminais
- Tact switch - 6x6mm
- 4 terminals

Código de compra / How to order

A06-4.3

Altura total (L) / Total height (L)

| | |
|-------------|---------------|
| 4.3: 4,3 mm | 9.5: 9,5 mm |
| 5.0: 5,0 mm | 12.0: 12,0 mm |
| 7.0: 7,0 mm | 15.0: 15,0 mm |
| 7.7: 7,7 mm | 17.0: 17,0 mm |



Especificações / Specifications

| | |
|--|-------------------|
| Carga máx. no contato / Max. contact load | 12 VCC/VDC - 50mA |
| Arranjo do contato / Contact arrangement | 1 NA/NO |
| Resistência no contato / Contact resistance | 100mΩ máx. |
| Resistência de isolamento / Insulation resistance | 100MΩ mín. |
| Rigidez dielétrica / Dielectric strength (1 minuto / minute) | 250 VCA/VAC |
| Vida elétrica / Electrical life (operações / operations) | > 100.000 |
| Força de acionamento / Operating force | 160gf ± 50gf |
| Curso / Stroke | 0,25mm |

Dimensões e diagramas / Dimensions and layouts

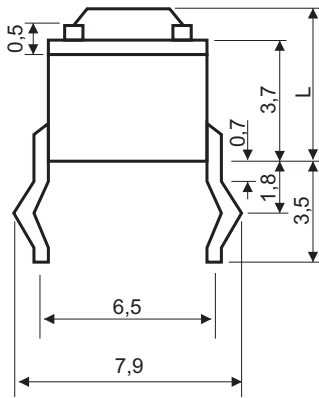


Diagrama PCI / Printed circuit layout

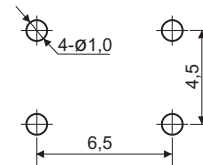
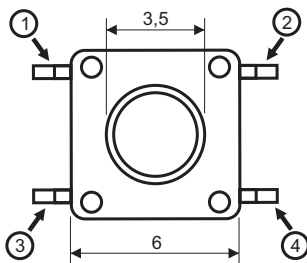
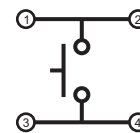


Diagrama Elétrico / Schematic



Tolerância / Tolerance : ± 0,20 mm

Todas as dimensões em milímetros / All dimensions in millimeters

- Chave táctil - 6x3,5mm
- 2 terminais
- Tact switch - 6x3.5mm
- 2 terminals

Código de compra / How to order

A06-4.3-D1

Altura total (L) / Total height (L)

4.3: 4,3 mm

5: 5,0 mm



Especificações / Specifications

| | |
|--|-------------------|
| Carga máx. no contato / Max. contact load | 12 VCC/VDC - 50mA |
| Arranjo do contato / Contact arrangement | 1 NA/NO |
| Resistência no contato / Contact resistance | 100mΩ máx. |
| Resistência de isolamento / Insulation resistance | 100MΩ mín. |
| Rigidez dielétrica / Dielectric strength (1 minuto / minute) | 250 VCA/VAC |
| Vida elétrica / Electrical life (operações / operations) | > 100.000 |
| Força de acionamento / Operating force | 160gf ± 50gf |
| Curso / Stroke | 0,25mm |

Dimensões e diagramas / Dimensions and layouts

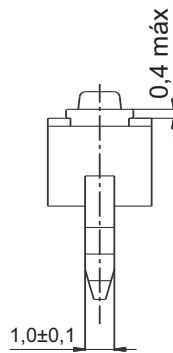
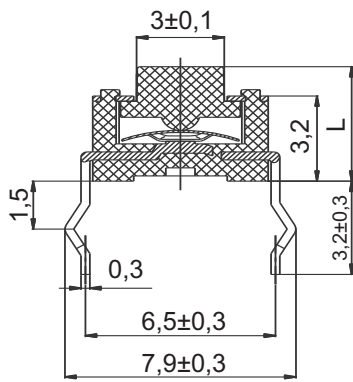


Diagrama PCI / Printed circuit layout

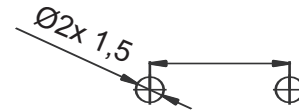
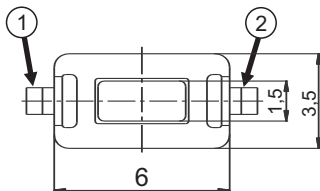
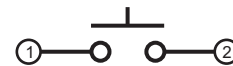


Diagrama Elétrico / Schematic



Tolerância / Tolerance : ± 0,20 mm

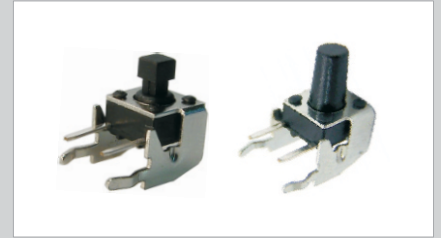
Todas as dimensões em milímetros / All dimensions in millimeters

- Chave táctil - 90°
- Tact switch - 90°

Código de compra / How to order

A06N-9.5

Altura total (L) / Total height (L)
 9.5: 9,5 mm - Atuador redondo
 7.3Q: 7,3 mm - Atuador quadrado

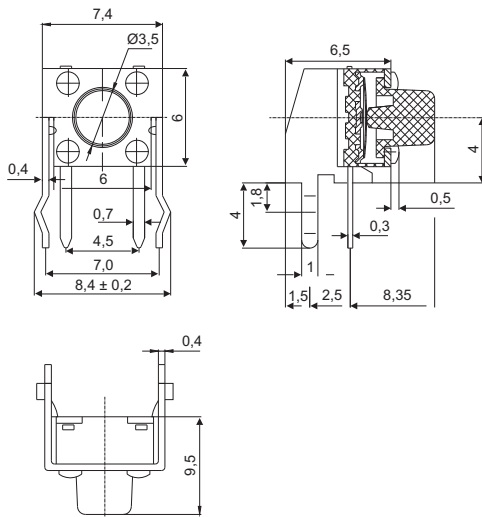


Especificações / Specifications

| | |
|--|------------------|
| Carga máx. no contato / Max. contact load | 12 VCC/DC - 50mA |
| Arranjo do contato / Contact arrangement | 1 NA/NO |
| Resistência no contato / Contact resistance | 100mΩ máx. |
| Resistência de isolamento / Insulation resistance | 100MΩ min. |
| Rigidez dielétrica / Dielectric strength (1 minuto / minute) | 250 VCA/VAC |
| Vida elétrica / Electrical life (operações / operations) | > 100.000 |
| Força de acionamento / Operating force | 160gf ± 50gf |
| Curso / Stroke | 0,25mm |

Dimensões e diagramas / Dimensions and layouts

A06N-9.5



A06N-7.3Q

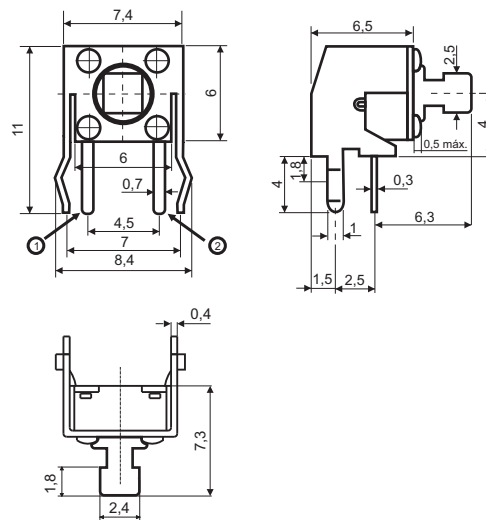


Diagrama PCI / Printed circuit layout

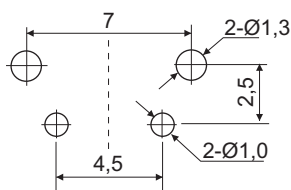


Diagrama Elétrico / Schematic



Tolerância / Tolerance : ± 0,20 mm

Todas as dimensões em milímetros / All dimensions in millimeters

- Chave táctil - 12x12mm
- Tact switch - 12x12mm

Código de compra / How to order

A07-1-12.0

Altura total (L) / Total height (L)

4.3: 4,3 mm

8.5: 8,5 mm

12.0: 12,0 mm



Especificações / Specifications

| | |
|--|-------------------|
| Carga máx. no contato / Max. contact load | 12 VCC/VDC - 50mA |
| Arranjo do contato / Contact arrangement | 1 NA/NO |
| Resistência no contato / Contact resistance | 100mΩ máx. |
| Resistência de isolamento / Insulation resistance | 100MΩ mín. |
| Rigidez dielétrica / Dielectric strength (1 minuto / minute) | 250 VCA/VAC |
| Vida elétrica / Electrical life (operações / operations) | > 100.000 |
| Força de acionamento / Operating force | 160gf ± 50gf |
| Curso / Stroke | 0,3mm |

Dimensões e diagramas / Dimensions and layouts

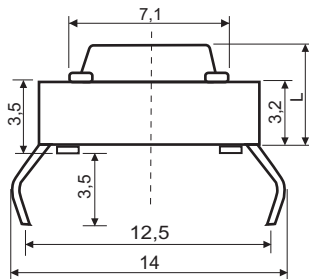


Diagrama PCI / Printed circuit layout

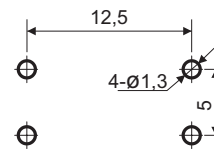
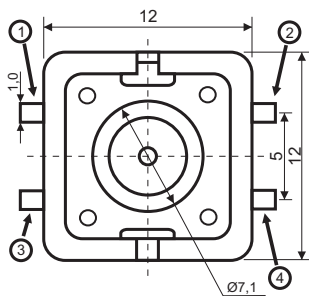
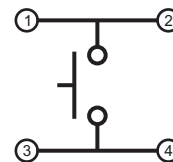


Diagrama Elétrico / Schematic



Tolerância / Tolerance : ± 0,20 mm

Todas as dimensões em milímetros / All dimensions in millimeters

- Chave táctil - 5,1x5,1mm
- Terminais para SMD
- Tact switch - 5,1x5,1mm
- SMD terminals

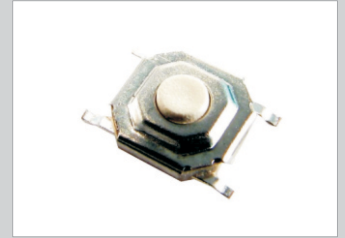
Código de compra / How to order

A05S-1.6-160

Força de acionamento / Operating force

160: 160gf±50gf

260: 260gf±50gf



Especificações / Specifications

| | |
|--|------------------------------|
| Carga máx. no contato / Max. contact load | 12 VCC/VDC - 50mA |
| Arranjo do contato / Contact arrangement | 1 NA/NO |
| Resistência no contato / Contact resistance | 50mΩ máx. |
| Resistência de isolamento / Insulation resistance | 100MΩ mín. |
| Rigidez dielétrica / Dielectric strength (1 minuto / minute) | 250 VCA/VAC |
| Vida elétrica / Electrical life (operações / operations) | > 50.000 |
| Força de acionamento / Operating force | 160gf ± 50gf ou 260gf ± 50gf |
| Curso / Stroke | 0,25mm |

Dimensões e diagramas / Dimensions and layouts

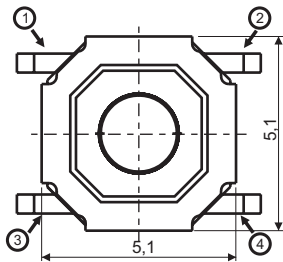
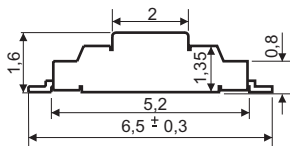


Diagrama PCI / Printed circuit layout

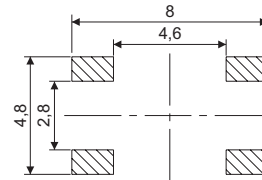
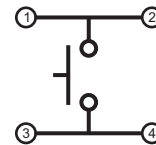
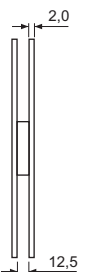
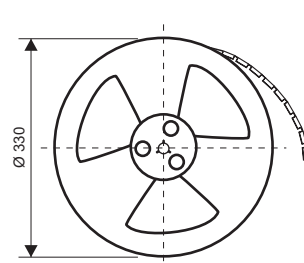
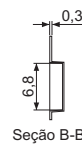
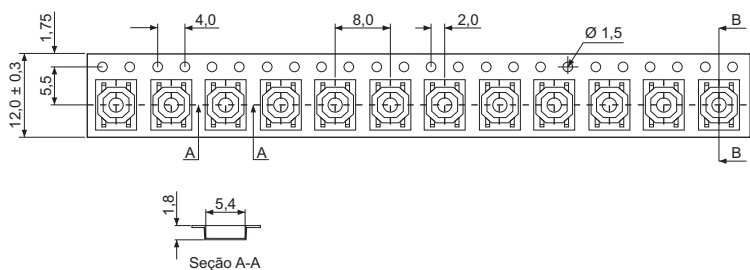


Diagrama Elétrico / Schematic



Embalagem / Packing



Tolerância / Tolerance : ± 0,20 mm

Todas as dimensões em milímetros / All dimensions in millimeters