

• Uso com relés JXD, JX2 e JXE2 e JXE1RP

• 8 pinos

• Montagem em circuito impresso

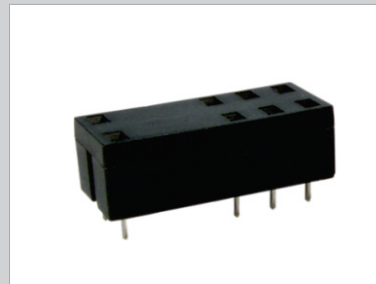
• Suitable for JXD, JX2, JXE2 and JXE1RP relays

• 8 pins

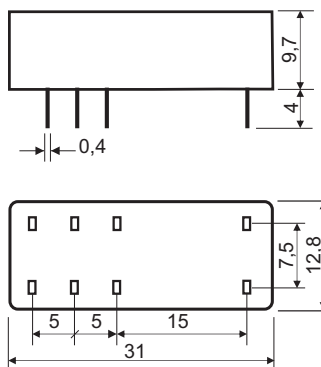
• PCB mounting

Código de compra / How to order

JX12-CI-1



Dimensões / Dimensions



Tolerância / Tolerance : $\pm 0,20$ mm

Todas as dimensões em milímetros / All dimensions in millimeters