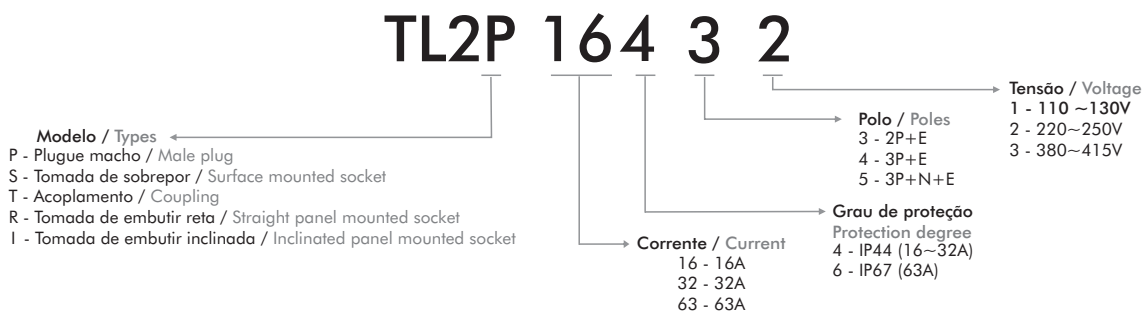


- 2ª geração de tomadas e plugs com desenho mais moderno e mais fácil de instalar
- De acordo com normas NBR IEC 60309, DIN49462/3 e VDE0623
- Partes plásticas de poliamida 6.6 auto-extinguível e terminais de latão maciço
- Os modelos de 63A possuem contato piloto para bloqueio elétrico (contator)
- Grau de proteção IP44 para modelos de 16 e 32A e IP67 para 63A e 125A
- Tensão máxima de trabalho 690 Vrms
- Temperatura de operação de até 120°C continuamente

- 2nd generation of plugs and sockets with a modern design and easier to install
- According to NBR IEC 60309, DIN49462/3 and VDE0623 standards
- Polyamide 6.6 self-extinguishing plastic parts and solid brass terminals
- 63A models with pilot contact for electrical interconnection (contactor)
- IP44 protection degree for 16 and 32A type and IP67 for 63A and 125A type
- Maximum operation voltage of 690Vrms
- Up to 120°C continuous operation temperature

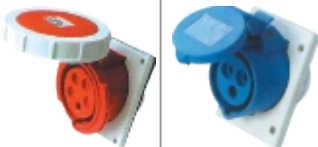




Código de compra / How to order

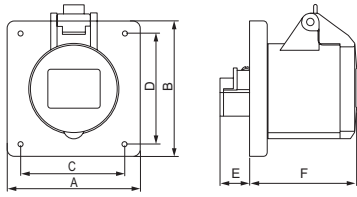


Modelo / Model	Tensão / Voltage	Corrente / Current	Pólos / Poles	Posição Horária / Clock Position	Código / Order	
 TL2S - Tomada de sobrepor Surface mounted socket	110~130V (Amarelo / Yellow)	16A	2P+E	4H	TL2S16431	
		32A	2P+E	4H	TL2S32431	
		220~250V (Azul / Blue)	16A	2P+E	6H	TL2S16432
			32A	3P+E	9H	TL2S16442
			32A	2P+E	6H	TL2S32432
			32A	3P+E	9H	TL2S32442
	380~415V (Vermelho / Red)	63A	2P+E	6H	TL2S63632	
		63A	3P+E	9H	TL2S63642	
		16A	3P+E	6H	TL2S16443	
		32A	3P+N+E	6H	TL2S16453	
		32A	3P+E	6H	TL2S32443	
		32A	3P+N+E	6H	TL2S32453	
63A (IP67)	16A-32A (IP44)	63A	3P+E	6H	TL2S63643	
63A (IP67)	16A-32A (IP44)	63A	3P+N+E	6H	TL2S63653	
 TL2R - Tomada de embutir reta Straight panel mounted socket	110~130V (Amarelo / Yellow)	16A	2P+E	4H	TL2R16431	
		32A	2P+E	4H	TL2R32431	
		220~250V (Azul / Blue)	16A	2P+E	6H	TL2R16432
			32A	3P+E	9H	TL2R16442
			32A	2P+E	6H	TL2R32432
			32A	3P+E	9H	TL2R32442
	380~415V (Vermelho / Red)	63A	2P+E	6H	TL2R63632	
		63A	3P+E	9H	TL2R63642	
		16A	3P+E	6H	TL2R16443	
		32A	3P+N+E	6H	TL2R16453	
		32A	3P+E	6H	TL2R32443	
		32A	3P+N+E	6H	TL2R32453	
63A (IP67)	16A-32A (IP44)	63A	3P+E	6H	TL2R63643	
63A (IP67)	16A-32A (IP44)	63A	3P+N+E	6H	TL2R63653	

Dimensões / Dimensions (mm)

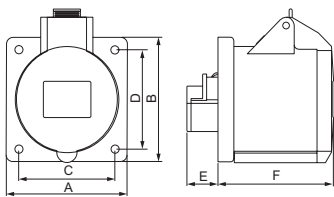
Modelo / Model	Tensão / Voltage	Corrente / Current	Pólos / Poles	Posição Horária Clock Position	Código / Order	
TL2I - Tomada de embutir inclinada Inclined panel mounted socket 	110~130V (Amarelo / Yellow)	16A	2P+E	4H	TL2I16431	
		32A	2P+E	4H	TL2I32431	
		220~250V (Azul / Blue)	16A	2P+E	6H	TL2I16432
				3P+E	9H	TL2I16442
			32A	2P+E	6H	TL2I32432
				3P+E	9H	TL2I32442
	380~415V (Vermelho / Red)	63A	2P+E	6H	TL2I63632	
			3P+E	9H	TL2I63642	
		16A	3P+E	6H	TL2I16443	
			3P+N+E	6H	TL2I16453	
		32A	3P+E	6H	TL2I32443	
			3P+N+E	6H	TL2I32453	
63A (IP67)	63A	3P+E	6H	TL2I63643		
16A~32A (IP44)	63A	3P+N+E	6H	TL2I63653		
TL2T - Acoplamento Coupling 	110~130V (Amarelo / Yellow)	16A	2P+E	4H	TL2T16431	
		32A	3P+E	4H	TL2T32431	
		220~250V (Azul / Blue)	16A	2P+E	6H	TL2T16432
				3P+E	9H	TL2T16442
			32A	2P+E	6H	TL2T32432
				3P+E	9H	TL2T32442
	380~415V (Vermelho / Red)	63A	2P+E	6H	TL2T63632	
			3P+E	9H	TL2T63642	
		16A	3P+E	6H	TL2T16443	
			3P+N+E	6H	TL2T16453	
		32A	3P+E	6H	TL2T32443	
			3P+N+E	6H	TL2T32453	
63A (IP67)	63A	3P+E	6H	TL2T6364		
16A~32A (IP44)	63A	3P+N+E	6H	TL2T63653		
TL2P - Plugue macho Male plug 	110~130V (Amarelo / Yellow)	16A	2P+E	4H	TL2P16431	
		32A	2P+E	4H	TL2P32431	
		220~250V (Azul / Blue)	16A	2P+E	6H	TL2P16432
				3P+E	9H	TL2P16442
			32A	2P+E	6H	TL2P32432
				3P+E	9H	TL2P32442
	380~415V (Vermelho / Red)	63A	2P+E	6H	TL2P63632	
			3P+E	9H	TL2P63642	
		16A	3P+E	6H	TL2P16443	
			3P+N+E	6H	TL2P16453	
		32A	3P+E	6H	TL2P32443	
			3P+N+E	6H	TL2P32453	
63A(IP67)	63A	3P+E	6H	TL2P63643		
16A~32A (IP44)	63A	3P+N+E	6H	TL2P63653		

TL2R



Corrente (A)	16	32
AxB	76	76
CxD	61	61
E	17	22
F	60	71
Área nominal (mm ²)	1-2,5	2,5-6

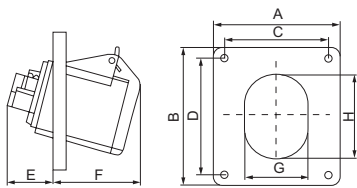
Tensão	Código
110 - 130V	TL2R16431
	TL2R32431
220 - 240V	TL2R16432
	TL2R16442
	TL2R32432
	TL2R32442
380 - 415V	TL2R16443
	TL2R16453
	TL2R32443
	TL2R32453



Corrente (A)	63
AxB	100
CxD	80
E	39
F	94,5
Área nominal (mm ²)	6-16

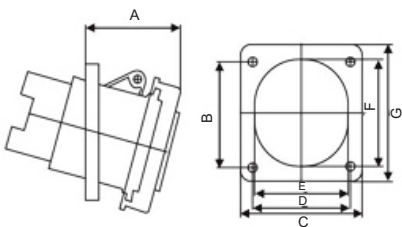
Tensão	Código
220 - 240V	TL2R63632
	TL2R63642
380 - 415V	TL2R63643
	TL2R63653

TL2I



Corrente (A)	16	32
A	93	93
B	101	101
C	78	78
D	86	86
E	36	41
F	49	59
G	70	72
H	77	83
Área nominal (mm ²)	1-2,5	2,5-6

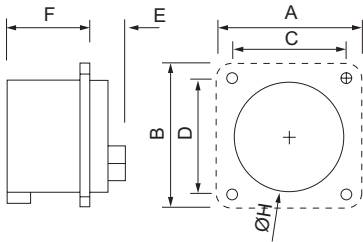
Tensão	Código
110 - 130V	TL2I16431
	TL2I32431
220 - 240V	TL2I16432
	TL2I16442
	TL2I32432
	TL2I32442
380 - 415V	TL2I16443
	TL2I16453
	TL2I32443
	TL2I32453



Corrente (A)	63
A	86
B	89
C	101
D	81
E	80,5
F	92,2
G	113
Área nominal (mm ²)	6-25

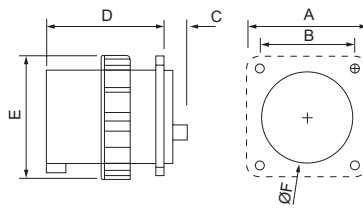
Tensão	Código
220 - 240V	TL2I63632
	TL2I63642
380 - 415V	TL2I63643
	TL2I63653

TL2L



Corrente (A)	16	32
AxB	75	75
CxD	56	56
E	26	30
F	42	50
Área nominal (mm ²)	1-2,5	2,5-6

Tensão	Código
110 - 130V	TL2L16431
	TL2L32431
220 - 240V	TL2L16432
	TL2L16442
	TL2L32432
	TL2L32442
380 - 415V	TL2L16443
	TL2L16453
	TL2L32443
	TL2L32453



Corrente (A)	63
A	100
B	81
C	20
D	108
E	109
F	75
Área nominal (mm ²)	6-16

Tensão	Código
220 - 240V	TL2L63632
	TL2L63642
380 - 415V	TL2L63643
	TL2L63653